

## Ultimate High-Speed Mild Solvent Printers



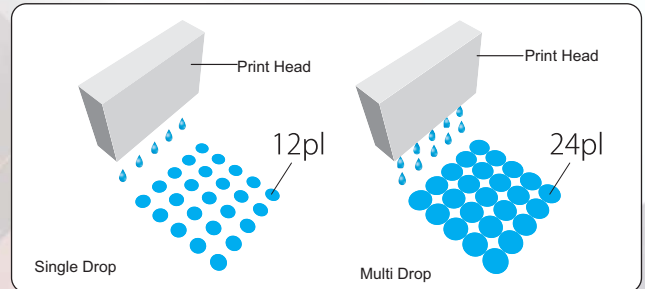
### Perfect balance between high-speed printing and excellent image quality

- 8-color ink set (C, M, Y, K, Lc, Lm, Gray & Light Gray) provides smooth gradations and great image quality.
- 4-color configuration boosts printing speed to 100 sqm/h keeping excellent print density.
- Newly developed high-frequency inkjet heads with multi-drop technology allows extremely high-speed printing.
- Smart Pass Technology optimizes pass-to-pass dot placement for smooth spot colors and gradients.
- Combination of automatic print head height adjustment and selectable pinch roller pressure ensures optimum printing quality for various types of media.
- Large 1.5 liter ink reservoir and sub tank system for each color allows round-the-clock printing.
- Mesh media printing option expands the types of products you can create.
- Support of bulk media rolls with weights up to 120 kg.

## High-Frequency Print Heads With Multi-Drop Technology

<b>Banner</b> (Draft 1 Mode)	4-color	100m <sup>2</sup> /h
	8-color	50m <sup>2</sup> /h
<b>PVC</b> (Normal 1 Mode)	4-color	60m <sup>2</sup> /h
	8-color	30m <sup>2</sup> /h

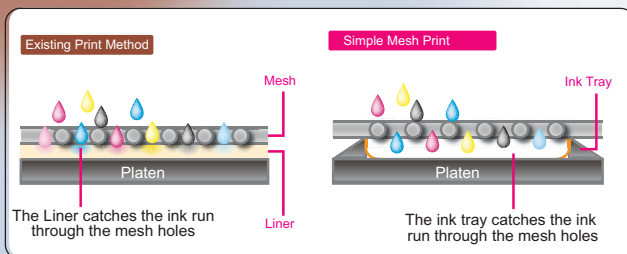
Using ColorPainter H-104s EGO GX ink



The ColorPainter H-series can print with superb ink density even at the maximum printing speed. This is possible due to the incredible drop ejection speed (frequency) of newly developed print head, and Multi-Drop Technology. Multi-Drop Technology makes the ink droplet size double to fully cover the space between each dots in coarse printing resolution suitable for mid to long distance signage.

## Mesh Printing Kit - ColorPainter H-104s only

Optional mesh printing kit enables you to switch your **ColorPainter H104s** to a mesh media printer by installing an add-on kit.



## Pressure Control Knobs

Pressure control knobs are equipped on front and rear side of the printer for easy handling the large size media. Pinch roller pressure can also be changed in 3 levels by turning the knob.



## Double Side Printing Support Function\*

Printer prints alignment line and cut line after printing image on the front side, which will help positioning operation on the back side printing.

Printed and taken-up roll is moved to the roll feed unit, and is fed to printer again upside down\*\*.

\* Alignment accuracy depends on the positioning for the back side printing, thus this function is not suitable for transparent media such as Flexible face.

\*\* Sufficient dry-up time is required; 3 to 24 hours depends on the coverage rate.

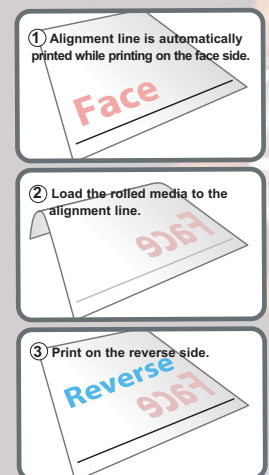


Image drawing of two-sided printing assistance

## Multiple take-up system configurations



QUALITY

**Multiple Head Configurations To Match Your Business**

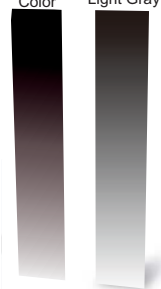
8 print heads can be configured in 2 ways, 8 x 1 mode (8 colors, 1 head each color) for maximum print quality; 4 x 2 mode (4 colors, 2 heads each color) delivers maximum printing speed, ideal for outdoor banner applications.



**New added colors:  
Gray and Light Gray Inks**

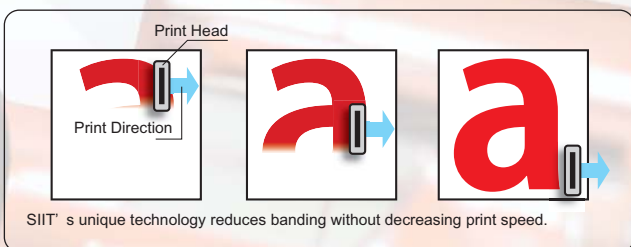
Gray and Light gray ink make it possible to prints real gradation, light shadows and metallic texture which can not be achievable with composite color.

Composite Color    Gray & Light Gray



**Automatic Head-height Adjustment and  
Selectable Pinch Roller Pressure**

The ColorPainter H-series detects the thickness of loaded media, and adjusts the print head height automatically to secure the best image quality. In combination with the 3-pressure pinch rollers, media with up to 1.0mm thickness can be handled.



**"Smart Pass Technology" banding reduction**

SIIT's original Smart Pass Technology optimizes pass-to-pass dot placement and alignment to provide smooth spot colors and gradients.

RELIABILITY



**Large 1.5 Liter Ink Reservoirs and  
Sub-Tanks**

The ColorPainter H-series utilizes efficient ink bags that eliminate environmental waste, and make changing ink easy. The 1.5 liter per head ink system reduces the need for frequent ink replacement. Sub-Tanks allow on-the-fly changing of ink reservoirs.



## Specifications

Model		IP-7900 (ColorPainter H-104s)	IP-7700 (ColorPainter H-74s)
Print Head		High-frequency drop on demand piezo	
Number of Nozzles		508 nozzles x 8	
Maximum Resolution		720 dpi	
Maximum Media Width		2,642 mm (104")	1,900 mm (74.8")
Maximum Print Width		2,632 mm (103.6")	1,890 mm (74.4")
Media Weight		Up to 120 kg (264 lbs.)	Up to 50 kg (110 lbs.)
Maximum Media Diameter		350 mm (13.8")	220 mm (8.7")
Margin Size		5mm on each edge (with rolled media, without edge guards)	
Ink	Type	Mild Solvent : EGO-GX	
	Color	8 (C, M, Y, K, Lc, Lm, Gray & Light Gray) or 4 (C, M, Y, K) x 2	
	Ink Capacity	1,500 ml per color	
Media		PVC, banner and other media designed for solvent printers.	
Heater		3-way built in heaters (Front/Print/Rear); Max temp. 70 °C	
Take-up modes		Loose/Inner, Loose/Outer, Tension/Inner, Tension/Outer	
Interface		USB 2.0	
Power Voltage		200 to 240 VAC, ±20V	
Power Consumption	Printer	1440 W or less	
	Heater	2880 W or less	
Operating Environment		Operating Environment 15 - 30°C (59 - 86°F) 30 to 70% RH (no condensation)	
Storage Environment		5 - 35°C (41 - 95°F) 10 to 80% RH (no condensation)	
External Dimensions (W) x (D) x (H)		4126 x 1366 x 1513 mm (162" x 54" x 60")	3,383 x 1,275 x 1,511 mm (133" x 50" x 60")
Weight		600 kg (1,322 lbs.) or less	450 kg (992 lbs.) or less
Option		Mesh Printing Kit, Foot Switch, Scroller, Exhaust Attachments	Scroller Set (Shaft & 2 Flanges), Scroller Flange (2pcs/set), Exhaust Attachments

## Speed

Print Mode	Color	ColorPainter H-104s	ColorPainter H-74s
Draft	4-color	100 smph (1075 sfph)	
	8-color	50 smph (538 sfph)	
Fine Draft	4-color	80 smph (860 sfph)	72 smph (774 sfph)
	8-color	40 smph (430 sfph)	36 smph (387 sfph)
Normal	4-color	60 smph (645 sfph)	54 smph (581 sfph)
	8-color	30 smph (323 sfph)	27 smph (290 sfph)

## Consumables

	Item	Part No.	Q'ty
Ink Pack (1500 ml each color)	EGO-GX Y (Yellow)	IP7-101	1
	EGO-GX M (Magenta)	IP7-102	1
	EGO-GX C (Cyan)	IP7-103	1
	EGO-GX K (Black)	IP7-104	1
	EGO-GX Lc (Light Cyan)	IP7-105	1
	EGO-GX Lm (Light Magenta)	IP7-106	1
	EGO-GX Gy (Gray)	IP7-107	1
	EGO-GX Lgy (Light Gray)	IP7-108	1

## Optional Parts

Parts	Part No.	Q'ty	Remarks
Mesh Printing Kit (104s)	IP7-011	1	* To be released early in 2009
Exhaust Attachments	IP7-013	1 (set of two pieces)	
Foot Switch	IP7-014	1 (set of two pieces)	
Scroller	IP7-015	1	
Scroller Flange	IP7-018	1 (set of two pieces)	
Scroller Set	IP7-019	1	* Includes a shaft and two flanges

Specifications are subject to change without notice. Please contact your local authorized SIIT reseller, or European sales office

### Headquarter

8, Nakase 1-chome, Mihama-ku,  
Chiba-shi, Chiba 261-8507, Japan  
Tel.: +81-43-211-1363

### European Sales Office

Avenue de Messidor,198  
1180 - Brussels - Belgium  
Tel.: +33 1 60 19 35 41  
Fax: +33 1 60 19 35 17

### U.K. Distributor

Colourgen  
The Amber Centre,  
Oldfield Road,  
Maidenhead Berkshire SL61TH,  
Tel: +44 (0)1628 588722  
U.K.



E-mail: sales@colourgen.com  
[www.colourgen.com](http://www.colourgen.com)